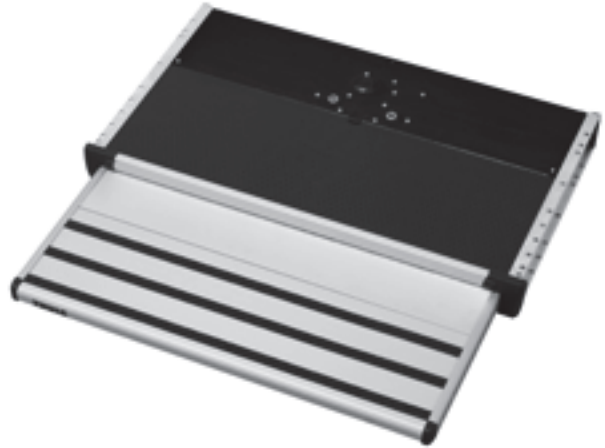
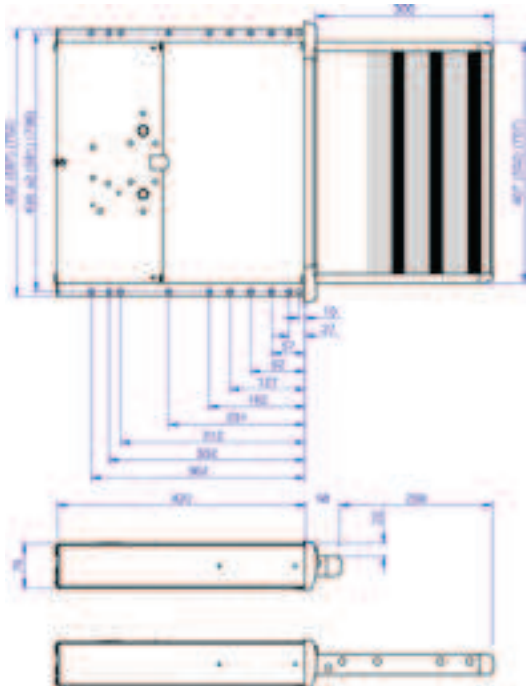


# Thule Step

12V Slide-Out 400, 550 & 700 Alu



## Information

- Motor / Manual Motor
- Width 400, 550, 700mm
- Weight 7.2kg up to 10.6kg
- Material Corrugated anodised aluminium

## USP's

- Higher quality standard: synchronous motor mechanism
- Better ergonomics: 21mm more projection
- Easy maintenance and emergency stow: easy removable footboard
- Reduced weight
- Increased security (load security, antislip, led light integration (optional))

## Specifications

- High performing sliding RV step
- Footboard projection 300mm
- Exceeds the European norm 2001/85/EG (RV EN1646-1 and EN1645-1)
- Better protection for dust infiltration: integrated brushes
- Load security: step does not operate with more than 15kg load
- Anti-slip security with 3M safety walk
- Integration of optional LED strip
- Different installation sets for vans available (Ducato, Sprinter, etc...)



## Related Products

- Set of LED lights for optimal visibility - 1m - ref. 307134
- Relay: ensures that the steps are folded up when the motor starts - ref. 308200
- Step control box, ensures that the step automatically slides out and in when the door is opened and closed - ref. 308812

## Dimensions

Type	Reference	Width of the Step	Total Width	Distance between the Fixation Parts	Weight
400	306582	407mm	452mm	436 +/- 2mm	7.2kg
550	306589	552mm	597mm	581 +/- 2mm	8.4kg
700	306592	707mm	752mm	736 +/- 2mm	10.6kg

## Installation Kits for Thule Slide-Out

306682/309946	Installation set Ducato Slide-out V12 >>2007
306683	Installation set Transit Slide-out V12 < 2014
309955	Installation set Transit Slide-out V12 > 2015
306684	Installation set Master Slide-out V12
306685	Installation set Sprinter Slide-out V12 >05/2006
308206	Installation set Ducato Slide-out V12 <<2006

Installation Set Ducato Slide-Out V12 :

